

## Become A Friend

An invitation is extended to any person, association, corporate/business or farm/family interested in assisting with our support of the Pennsylvania Farm Show. Contributions to become a friend are \$65 annually or \$500 lifetime. As a friend, you are eligible to participate in the organization of educational programs, events, and incentives throughout the year.

As a charitable, non-profit organization under Section 501(c)(3), all donations are considered tax deductible charitable contributions.

## Friend Application

\_\_\_\_\_ **Yearly Friend - \$65**

\_\_\_\_\_ **Lifetime Friend - \$500**

\_\_\_\_\_ **I would like to make a donation**  
**Donation amount: \$ \_\_\_\_\_**

**Name** \_\_\_\_\_

**Address** \_\_\_\_\_

**City** \_\_\_\_\_ **State** \_\_\_\_\_ **Zip** \_\_\_\_\_

**Phone** \_\_\_\_\_

**Email** \_\_\_\_\_

**Check enclosed**

**Please make your check payable to:**

Friends of the Pennsylvania  
 Farm Show Foundation, Inc.

**Mail to:**

Friends of the PA Farm Show Foundation  
 c/o PA Farm Show Complex & Expo Center  
 2300 North Cameron Street, Harrisburg, PA 17110

**Pay by credit card:**

Call Debby Griffith, Bookkeeper, at 717-497-5660

**I want more information about the Foundation**

**I am interested in serving as a volunteer at the  
 2025 Farm Show Foundation Booth**

## Mission Statement

The Foundation exists in order to **facilitate, stimulate and support** educational programs, incentives and events relating to the annual Pennsylvania Farm Show.

The Friends of the Pennsylvania Farm Show Foundation, Inc., that was incorporated in the Commonwealth of Pennsylvania in 2010 as a non-profit corporation, is recognized as a tax-exempt, charitable organization under Section 501(c)(3) of the United States Internal Revenue Code. Contributions to the Foundation are tax deductible.

Official registration and financial information about Friends of the Pennsylvania Farm Show Foundation, Inc. may be obtained from the Pennsylvania Department of State.

Registration does not imply endorsement.



### — BOARD MEMBERS —

<b>WILLIAM L. PIPER</b> .....	Chairman
<b>MICHAEL H. FIRESTINE</b> .....	Vice-Chairman
<b>MARK KELLER</b> .....	Secretary
<b>LARRY WEAVER</b> .....	Treasurer
<b>ELIZABETH BAILEY</b> .....	Member
<b>GALEN KOPP</b> .....	Member
<b>NATHAN TALLMAN</b> .....	Member
<b>LELA REICHART</b> .....	Member
<b>VICKI VARNER</b> .....	Member
<b>GERALD REICHARD</b> .....	Special Advisor
<b>RACHEL SCHLEGEL</b> .....	Marketing
<b>DEBORAH TRUMP</b> .....	Recording Secretary

## 2024 Mike Waugh Celebrity Feed Scurry

**The Feed Scurry is a significant fundraising event for the Foundation. Thank you to all who participated!**

- ABC 27  
Valerie Pritchett, News Anchor-Sponsor & Driver
- Adams Electric-Sponsor  
Representative Torren Ecker-Driver
- Bell & Evans-Sponsor  
Representative Tim Twardzik-Driver
- Cohick & Associates  
Jeff Cohick-Sponsor & Driver
- F&M Trust-Sponsor  
Luke Bernstein, PA Chamber of Commerce-Driver
- Farm Credit-Sponsor  
Representative Emily Kinkead-Driver
- Fulton Bank-Sponsor  
Representative Dawn Keefer-Driver
- Hanover Shoe Farms-Sponsor  
Representative Dan Moul-Driver
- HR Ewell, Inc.-Sponsor  
Representative David Zimmerman-Driver
- Karns Foods-Sponsor  
Senator Kristin Phillips-Hill-Driver
- Keystone Crop Insurance Services-Sponsor  
Auditor General Tim Defoor-Driver
- Kreider Farms-Sponsor  
Representative Abigail Salisbury-Driver
- Lancaster Farming-Sponsor  
Representative Tom Jones-Driver
- Mark Hershey Farms, Inc.-Sponsor  
Representative Eddie Day Pashinski-Driver
- Orrstown Bank-Sponsor  
Senator Greg Rothman-Driver
- PA Association of Milk Dealers-Sponsor  
Representative Jamie Barton-Driver
- PA Bankers Association-Sponsor  
Representative Sheryl Delozier-Driver

- PA Dairymen's Association-Sponsor  
Representative Jim Haddock-Driver
- PA Equine Council-Sponsor  
Representative David Delloso-Driver
- PA Farm Bureau-Sponsor  
Representative Barb Gleim-Driver
- PA Livestock Association-Sponsor  
Representative Wendy Fink-Driver
- PA State Association of County Fairs-Sponsor  
Chloe Bomgardner, State Fair Queen-Driver
- PA State Dairy Princess & Promotion-Sponsor  
Alexis Butler, PA State Dairy Princess-Driver
- PCNTV  
Debora Kohr Sheppard,  
PCNTV President-Sponsor & Driver
- PennAg Industries Association-Sponsor  
Representative Leanne Krueger-Driver
- Power Pro Equipment-Sponsor  
Representative Ed Neilson-Driver
- Standardbred Horse Sales Company-Sponsor  
Jana Mellott, PA Livestock Association-Driver
- Stermann Masser, Inc.-Sponsor  
Glenn Weist, GM, Keystone Potato Products-Driver
- Versant Strategies-Sponsor  
Deputy Secretary Lisa Graybeal-Driver
- Vesper Energy-Sponsor  
Senator Elder Vogel-Driver
- Williams Company-Sponsor  
Representative Jeannie McNeil-Driver
- Zook Ag Nutritional Products-Sponsor  
Representative Keith Greiner-Driver

For more information about the Foundation contact Gerald Reichard at 717-729-7158 or farmshowfriends@gmail.com.

For Visitor's Guide information contact Rachel Schlegel at 717-682-2351 or penguingraphix@gmail.com.

[www.friendsoffarmshow.com](http://www.friendsoffarmshow.com)



## Friends of Farm Show Funding the Future of Ag

Spring 2024

Thanks to your contributions we are able to directly support 4-H, FFA, Farm Show Jr. Committee & Farm Show Special Operations Team



2023-24 State FFA Officers



2023-24 4-H State Council Officers



2024 Farm Show Junior Committee



2024 Farm Show Special Operations Team

### Foundation Contact Information

**Email:** farmshowfriends@gmail.com

**Visit:** www.friendsoffarmshow.com

**Follow:**

**Write:** Friends of the PA Farm Show Foundation  
 c/o PA Farm Show Complex & Expo Center  
 2300 North Cameron Street, Harrisburg, PA 17110



# 2024 Sponsored Events

Below are some of the events the Foundation is able to help fund through the support of our generous sponsors.

If you are interested in sponsoring a current event or have a new idea for the 2025 show, contact Gerald Reichard at 717-729-7158 or farmshowfriends@gmail.com.

**SHEEP-TO-SHAWL/ FLEECE-TO-SHAWL** - An annual Pennsylvania Farm Show favorite since 1980. The educational event has stood the test of time because it is a demonstration which brings many people back to their roots as well as educate the younger attendees. They get to experience spinning and weaving of wool as it was done in America for many years.



**DRAFT HORSE PULLING COMPETITION** - Presenting the original agricultural 'horse power', these horses, exhibited in the pulling classes compete to pull the most amount of weight. These equine demonstrate the amount of strength necessary on the farm in order to complete heavy-duty jobs.



**LEARNING STATIONS** - Visitors of all ages can 'investigate' the show by becoming a Farm Show Detective. Visit all learning stations throughout the complex by following a map, taking the opportunity to investigate many features of agriculture throughout the Complex.



**AG MECHANICS COMPETITION** - Pennsylvania's finest FFA members team up to showcase their talents. In addition, other projects include entries of metal and wood products that follow a prescribed theme and show off the career ready skills the exhibitors share throughout the week of Farm Show.



**HORSE POWER!** - All kinds of Horse Power! fills the Equine Arena with antique and new tractors and equipment, tractor games, youth pedal tractor pulls and all sorts of power. There's sure to be something for everyone.



**CHILDREN'S PEDAL TRACTOR PULL** - Youth weighing between 40 and 90 pounds can participate in a pedal pull contest in one of five weight classes.



**CUMBERLAND 4-H DRILL TEAM** - These talented youth ride horseback to a choreographed music routine of intricate maneuvers and patterns.



**PA HIGH SCHOOL RODEO** - A longtime favorite, Pennsylvania's finest cowboys and cowgirls, grades 8-12, compete in professional rodeo classes. Two shows on opening day fill the arena and keeps fans on the edge of their seats.



**FAMILY LIVING STAGE** - Live and tasty action all week long! Sponsor the Family Living Stage where artisans present their artwork and judges taste Pennsylvania's finest Blue Ribbon Apple pies, Angel food cakes and more!



**HORSESHOE PITCHING** - A long-standing Farm Show tradition, horseshoe pitching, began in 1931. Considered one of the most prestigious tournaments in the National Horseshoe Association circuit, the competitors also do a hands-on demonstrations for show visitors.



**HORSE SHOEING/SHEEP SHEARING DEMONSTRATION** - A hands-on opportunity for visitors to get up and personal with activities which occur on livestock and horse farms everyday throughout Pennsylvania.



**COLORING CONTEST** - This contest provides an opportunity for any Pennsylvania resident to participate in the Farm Show.



Entries are split into seven age divisions from Pre-K to 65+.

**FFA MID-WINTER CONVENTION** - Nearly 5,000 Pennsylvania FFA members gather for their annual Mid-Winter Convention. Students receive Keystone Degrees, state stars and their famed blue corduroy jackets. The FFA provides its members with leadership development opportunities through classroom instruction, career development contests and real world agricultural career placement.



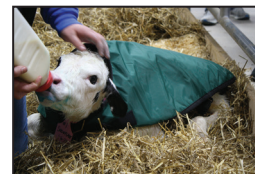
**SPEEDHORSE DEMONSTRATION** - The race is on! This high energy event consists of fun competition in pole bending, chalk keyhole, flag racing and dual flag racing for all ages. The event has dual purpose providing safe equine learning experiences and teaching Farm Show attendees about the horse industry through multiple fast paced and highly entertaining shows.



**MIKE WAUGH CELEBRITY DRAFT HORSE FEED SCURRY COMPETITION** - Through the vision of the Farm Show Draft Horse exhibitors this event has become one of the largest fundraisers for the Friends of the Farm Show Foundation. Kids are invited to participate in a stick horse race during intermission!



**CALVING CORNER** - Experience the miracle of a live dairy cow birth at the Calving Corner. Pennsylvania farm families share their pregnant cows in hopes of providing a fully inclusive birthing experience with Farm Show guests.



**TRUCK AND TRACTOR PULL DEMONSTRATION** - Rev up your engines and get your motor running for some of Pennsylvania's finely tuned trucks and tractors as they make their way down the track. Learn about these

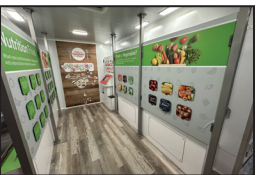


machines, their engines and what makes them roar.

**CONSERVATION DISPLAY** - In partnership with the PA No-Till Alliance, conservation practices go on display in a lifelike exhibit. This educational, full-size model features a growing field of crops being harvested, a variety of equipment, and even a buffered stream. Stop by on a daily basis to experience the rain simulator, learn about run off and interact with a no-till expert.



**PA FARMS TO FAMILIES IMMERSION LAB** - This mobile learning unit will engage youth and guests through hands-on learning experiences. It tells the stories of GIANT farmer partners featuring on-farm production practices, including a virtual reality tractor simulator, environmental conservation, and the process of bringing food from field to plate.



**CANINE EXTRAVAGANZA/ MEET THE BREEDS** - Sit. Sponsor. Stay. Join our canine friends several times throughout the week to explore the variety of dog breeds and their duties on the farm and in rural Pennsylvania. The event will surely have your tails waggin'!



**DRAFT HORSE HITCH AND DRIVE DEMONSTRATIONS** - Saddle up with these gentle giants as they are hitched into 2, 4, 6 and unicorn hitches.



**LUMBERJACK DEMONSTRATION - TIMBER!** Lumberjacks and jills compete from four participating Pennsylvania colleges. Talented ladies and 'fellers' show off their skills in a variety of classes.



## Thank you to the 2024 Platinum Sponsors



## Sponsorship Levels

**Platinum: \$20,000**

**Silver: \$10,000**

**Friend: \$2,500**

**Gold: \$15,000**

**Bronze: \$5,000**

Contact Gerald Reichard at 717-729-7158 for more details.

**MARK YOUR CALENDARS:  
2025 PA Farm Show: Jan. 4-11**